

# Beach Clean-up Tool Kit

LAKE HURON COASTAL CENTRE



LAKE HURON  
COASTAL CENTRE

# Table of Contents

## **Understanding Plastic Pollution**

General Plastic .....	1
Microplastic .....	3

## **Shoreline Clean-up Guide**

Introduction.....	9
Scheduling a Clean-up.....	10
Day of Clean-up .....	12
Packing List .....	14
After the Clean-up .....	15

## **Ocean Wise Resources**

Safety Sheet.....	16
Data Cards .....	17
Consent Form .....	19

<b>Contact Information.....</b>	<b>22</b>
---------------------------------	-----------

# Plastic Free Lake Huron

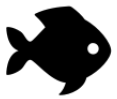
## WHY IS PLASTIC A PROBLEM?

### PLASTIC NEVER GOES AWAY



Plastic doesn't break down; it breaks up into smaller and smaller pieces. This material is made to be affordable and durable - a dangerous combination resulting in an abundance of plastic that will never entirely go away.

### PLASTIC AFFECTS WILDLIFE



Wildlife can become trapped in discarded fishing line and plastic packaging. Plastic can also be mistakenly eaten by wildlife that confuse it for food, leading to malnutrition or loss of life.

### PLASTIC POLLUTION IS GROWING



9 billion metric tons of plastic has been created globally since 1950 - the majority of it being produced in the last 15 years.

### PLASTIC SPOILS GROUND AND LAKE WATER



Toxic chemicals from the thousands of landfills that are piling up with plastic can seep into our groundwater. This contaminates water sources like wells, rivers and lakes that are fed by groundwater.

### FINDING A SOLUTION TO PLASTIC POLLUTION IS EXPENSIVE



Cleaning up plastic pollution in marine and freshwater environments is important for tourism, recreation, businesses and the health of both humans and animals. To mitigate the increasing use of single-use plastic items, more staff time and preventative cleanup measures are needed in high-traffic areas costing local economies more money.



Lake Huron Microplastic  
AWARENESS PROJECT

**The Microplastic Awareness Project (MAP)** aims to reduce the plastic pollution in Lake Huron and increase public awareness of the issue of plastic pollution in the Great Lakes.



Small, plastic pellets called nurdles can sometimes be found along the Great Lakes. These pellets serve as raw material, meaning they are melted and formed into many different plastic products. Spills and mishandling by industries that use these pellets can introduce them into our lakes, causing concerns for wildlife that may confuse the nurdles for a tasty snack.

**NURDLES**



### DITCH THE #6

Recyclable plastics are typically stamped with a triangular recycling logo and a number. This number corresponds to the type of plastic material being used in each item. Items with a #6 stamp are made out of polystyrene, also known as Styrofoam, which is notoriously difficult to recycle. These items, which includes coffee cup lids and plastic egg cartons, most often end up in landfills.



## ADDICTED TO PLASTIC

Busy lives demand convenience and plastic caters to our fast-paced lifestyle. It has crept into our households, workplaces and many other aspects of our daily lives as an affordable and durable on-the-go option. Plastic is simply **everywhere**.

## WHAT CAN YOU DO?

Recycling should be our last defense against plastic pollution. Only about **9% of plastic is recycled**, a small percentage is reused or incinerated, and the rest is deposited into landfills. Many recyclable items are not accepted by local waste management systems, so it's important to know what items can be put into your recycling bin.

## DID YOU KNOW?

...there could be at least half-a-million pieces of plastic per square kilometer in some parts of the Great Lakes? This is equivalent to 2,500 pieces of plastic in an area the size of a football field.

**22 MILLION LBS OF PLASTIC ENDS UP IN THE GREAT LAKES ANNUALLY**

**15 BILLION SINGLE-USE PLASTIC BAGS ARE USED BY CANADIANS EACH YEAR**

**57,000,000 PLASTIC STRAWS ARE THROWN AWAY IN CANADA EVERY DAY**

**CIGARETTES ARE THE #1 MOST LITTERED ITEM IN CANADA**

**MORE THAN 40% OF ALL PLASTIC IS USED ONCE AND THROWN AWAY**

**PLASTIC FIBERS ARE RELEASED FROM CLOTHING IN THE WASHING MACHINE**

**ONE STUDY FOUND MICROPLASTICS IN 80% OF LAKE HURON WATER SAMPLES**

## HOW TO BREAK UP WITH PLASTICS



**Let's end our unhealthy relationship with plastic!**  
Here are some ways you can make a difference:

- Volunteer for a shoreline clean-up event at [www.lakehuron.ca/volunteer](http://www.lakehuron.ca/volunteer)
- Make a "take-out" kit with reusable cutlery and containers for leftovers
- Say **NO** to single use plastic
- DITCH THE #6** - Avoid plastic products with a #6 (or higher) recycling stamp
- Refuse the Big 4** - single-use coffee cups, plastic bags, water bottles and straws are huge contributors to global plastic pollution. **Choose reusable options instead**
- Buy items with **LESS PACKAGING** and made with more environmentally friendly materials
- Talk to people**. Help them understand the problem and invite them to try more reusable options
- Take action**. Call on governments and business leaders to say no to single-use plastic
- Do a quick **2 minute beach clean-up** or **lead your own clean-up** through [www.shorelinecleanup.org/ca](http://www.shorelinecleanup.org/ca)

# UNDERSTANDING MICROPLASTICS



Lake Huron Microplastic  
AWARENESS PROJECT

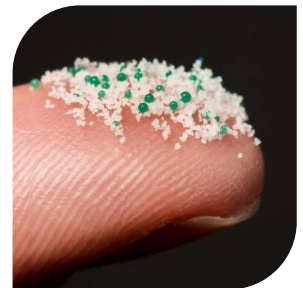
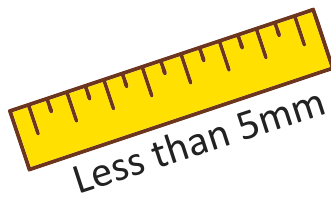


# MICROPLASTICS

What are they?

If you break apart the word "microplastic", you have the answer!

Microplastics are tiny pieces of plastic measuring less than 5 mm in length. They come in many shapes, sizes and colours, but most fall into one of these 5 categories.



Microbeads



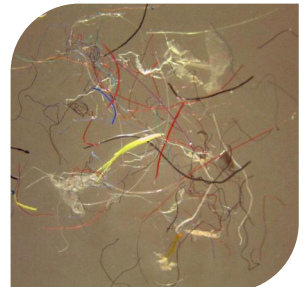
Nurdles



Fragments



Foam



Fibres



## Plastic Pollution

Katy Perry sang it best - "Like a plastic bag, drifting through the wind..."

When looking at plastics in our Great Lakes, a couple of questions come to mind.

**Where did they come from?**

**Where do they go?**

Plastic pollution has many sources including improper waste management in high traffic areas or accidental spills of packaging material at an industrial level. Once plastic enters the lakes or oceans, it is impossible to remove.

### Why?

Many plastics do not breakdown, meaning they do not naturally decompose and return nutrients back to their ecosystem. Instead, they break up into smaller and smaller pieces from the wind and waves tossing them around.

This is how many microplastics are made.



Cigarette butts are one of the most common types of litter found on beaches. Guess what they're made out of? **PLASTIC**. Cellulose acetate is a plastic found in cigarette filters. The combination of plastic pollution and over 165 different toxic chemicals poses significant threats to water quality and the health of wildlife.

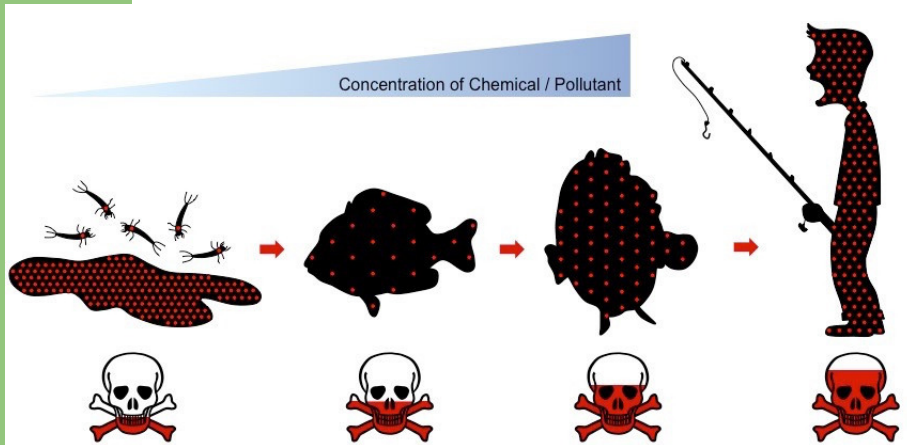




# Plastic in the Water

## Why Does That Matter?

Other than being unsightly, plastic waste can have numerous impacts on wildlife and water quality. Fish, birds and reptiles can easily mistake plastic for food, causing them harm or even death.



Source: BioNinja

When plastics are in the water, it acts as a magnet for many environmental toxins. Toxic chemicals that persist in the environment are attracted to the surface of the plastic. When this plastic is swallowed by something like a fish, the chemicals are absorbed into the animal's body. If this animal is then eaten by a hawk or even a human, those chemicals are then passed through the food chain. The animals highest in the food chain eat larger amounts of food to sustain themselves, meaning they are at the highest risk of being exposed to harmful toxins. This process is called **biomagnification**.





# SHORELINE CLEAN-UP GUIDE

---

*How to host a successful clean-up event*

---

LAKE HURON COASTAL CENTRE

## INTRODUCTION

# Introduction

### KEEPING IT CLEAN!

Lake Huron's sparkling blue waters and natural beauty attracts a diverse economy and numerous vacationers to its shores. An issue that is far from new is the large amount of plastic debris washing up on the beaches along the coast, casting a shadow of the problem that lays beneath the surface of the lake. Plastic pollution can present issues of entanglement, asphyxiation, and ingestion for wildlife, in addition to health risks for people caused by the accumulation of persistent organic toxins like DDT which are attracted to plastic compounds in water.

By hosting a community beach cleanup, the public is engaged in the major pollution threats faced by Lake Huron. Interest, concern and disgust are all expressed by the participants at the cleanups, especially when using the number of collected cigarette butts as a metric of success. It's important to properly execute a shoreline cleanup to ensure the future commitment of volunteers and dedicated beach goers. This document will go over how to organize a beach cleanup, what materials you will need on the day of the cleanup, recommendations on how to organize your volunteers based on number of participants and general best practices that have been useful in prior cleanups with the Lake Huron Coastal Centre.

### OCEAN WISE SHORELINE CLEANUP

Ocean Wise Shoreline Cleanups provides a platform for clean-up participants to submit data on the garbage they collect. Why is that important? "Because what is not measured, is not managed". By collecting usable data from these cleanups, organizations can have a better understanding of the major sources of beach litter and therefore, attempt to reduce the waste at its source.

To register a cleanup with Ocean Wise, visit this link: <https://ocean.org/action/lead-a-shoreline-cleanup/>. Here, you can fill in the details of the cleanup, send invitations to partners and participants and download data sheets and waivers for your cleanup. This will also be where you input the collected data after the cleanup.

---

## SCHEDULING THE CLEANUP

# Scheduling the Cleanup

### IDENTIFY PARTNERS

Creating partnerships with local organizations and grassroots groups can help create a more successful shoreline cleanup. Not only will the additional people increase participation, but the added advantage of having numerous groups advertising for an event can help increase participant numbers.

Past cleanup efforts have partnered with organizations like Zehrs, who have generously provided participants with a complementary barbeque lunch. Other options for sponsors to get involved includes offering discounts at their establishments or contributing financial support to assist with incentives for participants on the day of the event.

Any partners or sponsors for the event should be identified in flyers, social media posts or media releases to recognize their contribution.

### PICK A DATE

Some partnering organizations are interested in planning a cleanup for a specific date, whereas others have no limitations. Planning cleanups with a fixed date first can be more beneficial in figuring out where and when to plan additional cleanups.

Try not to schedule too many cleanups in the same geographic areas. If multiple partners from the same area are wanting to organize a cleanup on the same weekend, offer a suggestion for combining the cleanups or moving it to another date in the season to maximize exposure for them and impact from your participants.

### GET APPROVAL

Contact the local municipal events coordinator to get approval for the event. You may need to fill out an event application form depending on the size of your event.

### REGISTER THE CLEANUP

Any cleanups that are using the Ocean Wise can data cards and consent forms can be registered at <https://ocean.org/action/lead-a-shoreline-cleanup/>.

---

## SCHEDULING THE CLEANUP

### ARRANGE FOR WASTE / RECYCLING REMOVAL

We collect a lot of garbage and recycling at shoreline clean-up events. That's sort of the point. It's just as important to make sure that collected waste is properly disposed of after cleanups. Mismanagement of waste is often a culprit for beaches with high amounts of litter, so making sure a cleanup doesn't contribute to that issue is key. Contact the Municipality's Parks Department to organize a designated "Waste Drop-Off" zone and make sure that an appropriate pick-up time is scheduled.

### WASHROOM AND WATER REQUIREMENTS

Make sure that participants have access to washrooms and water to wash their hands. Communicate with the Town to ensure that these facilities are open and in place at the time of the cleanup. Keep in mind that water access might be limited for spring and fall shoreline cleanups, so additional facilities (ie. Port a Potty's) may need to be rented for larger events.

### ADVERTISE, ADVERTISE, ADVERTISE!

Advertising is key to any beach cleanup. The following methods of advertising have been MOST successful in past shoreline clean-ups:

- Get local partners. There is always better turnout when there is a familiar business or organization helping to promote your event
- Directly invite groups such as environmental organizations, community clubs (Rotary, Lions), high schools, colleges etc.
- Create a Facebook event
- Submit a Facebook ad (\$)
- Share volunteer flyer in local Facebook groups (buy and sells, upcoming events etc.)
- Email a media release to local radio stations

Other ways you can advertise include putting up flyers in local coffee shops and municipal buildings, tag any partners or groups of interest, newsletters, post on Twitter, Instagram, and LinkedIn. Anything you can do to get attention for the beach cleanup. Creating an infographic post for the website to post on the events section.

---

## THE DAY OF THE CLEANUP

# The Day of the Cleanup

### PRINT WAIVERS AND DATA SHEETS

See both in this document.

### SET UP A VOLUNTEER SIGN IN STATION

A volunteer station can help streamline volunteers and participants to a central meet up location. Set up an event shelter with a table and some chairs and set out waivers for participants to sign. This can also be where a water refill station, data cards and information sheets on beach litter can be stationed.

### COORDINATE BEACH LIASONS AND SECTION OFF THE BEACH

When expecting a beach cleanup to have a large number of participants, it's best to organize "Team Leaders" to be responsible for sections of the beach. Team leaders can be given a brightly colored t-shirt or a reflective vest to be visible to volunteers.

### WELCOME VOLUNTEERS

Start off the day with a positive and cheerful message, no matter the weather! Welcome all of the participants and volunteers to the beach cleanup and thank them for coming out. Explain how to use the data sheets and the importance of data collection for future projects. Go over the agenda for the day and the health and safety rules before sending everyone on their way or to their designated area on the beach. Make it clear to participants that they are only cleaning up man-made garbage, and should leave feathers, sticks, and dead animals behind. Have each volunteer sign the waiver, and provide them with gloves, a bag or bucket, a data card, and pencil.

### WEIGH GARBAGE

At the end of the cleanup, all collected garbage and waste can be weighed using a digital hanging scale.

---

## THE DAY OF THE CLEANUP

### OPTIONAL: SORTING STATION

Having a sorting station is an excellent way to utilize volunteers and efficiently sort the collected waste into recyclables, cigarette butts (for Terra Cycle) and waste. Make sure you have extra gloves on hand and the proper sorting receptacles ahead of time.

### TAKE A GROUP PHOTO

There's nothing better than ending a great cleanup with a smile! All participants that have signed the waiver and photo release can crowd around their piles of garbage with pride to get a group photo of their efforts.

### TIPS AND TRICKS

A few lessons that have been discovered during the years of coastal cleanups at the Lake Huron Coastal Centre:

- Don't give every participant a garbage bag. Many bags come back partially full, which in itself is wasteful. Instead, pair up or create groups of participants to share one bag. Even better, bring buckets or bins to minimize plastic pollution.
  - Encourage any sponsors of the events to consider a waste-free alternative meal. Many sponsors will bring bottled water or juice boxes to beach cleanup events, generating more waste on the beach. Options like paper plates and cups are more environmentally friendly options than plastic or Styrofoam.
-

## THE DAY OF THE CLEANUP

- Data Cards
  - Waivers
  - Clipboards
  - Pens/Pencils
  - Gloves
  - Garbage/Recycling Bags
  - Garbage Bag Holders
  - Buckets
  - Litter pickers
  - Sifters (for microplastics)
  - Sharps Container
  - Digital Hanging Scale
  - Informational Pamphlets
  - Folding Table and Chairs
  - Event Shelter
-



## AFTER THE CLEANUP

### After the Cleanup

#### ENTER CLEANUP DATA

Input the data cards on the Ocean Wise website. Tallying up the data cards prior to inputting the data will save you some time! Make sure to record the data card information and the weight of the garbage - this is important for the final year summary.

#### SHARE SUCCESS

Show off your success by posting pictures and results on Facebook, Instagram, newsletters, and news outlets that would be interested in picking up the story. Successful cleanups, especially the really big ones, help garner attention from additional sponsors willing to get involved in future clean up events.

#### THANK SPONSORS, PARTNERS, AND VOLUNTEERS

Let everyone know how appreciated their effort is and how they have made an impact.

---



## CLEANUP SAFETY

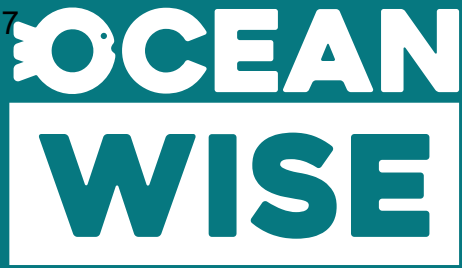
1. **ALWAYS** wear gloves and proper footwear (no open-toe shoes).
2. If in a group, set a time to **MEET BACK** at a predetermined location before starting.
3. If working alone, make sure someone **KNOWS YOUR LOCATION**.
4. **KNOW** where the first aid kit is located and keep a list of **EMERGENCY NUMBERS** close at hand.
5. All young children should be **SUPERVISED BY A RESPONSIBLE ADULT**.
6. **WATCH** your footing on slippery rocks & **NEVER** walk on loose terrain. Stay a safe distance from the water's edge.
7. Pay attention to **TIDE TIMES** if you are near the ocean and **KNOW** whether the tide is coming in or going out.
8. **ALL** sharp or dangerous items found on the shoreline, including syringes and broken glass, are to be placed in a **SHARPS CONTAINER**. Never handle these items with bare hands.
9. **DO NOT REMOVE** large items which are too heavy to carry.
10. **DO NOT USE** your back when lifting heavy items and **ALWAYS** bend at knees.
11. **NEVER** approach any animal, dead or alive.
12. **DO NOT REMOVE** litter that has become part of the habitat.

PRESENTING SPONSOR

**Loblaw Companies Limited**

NATIONAL SPONSORS





SHORELINE CLEANUP

Presented by Loblaw Companies Limited



SHORELINE CLEANUP

Presented by Loblaw Companies Limited

# Individual Data Card

## SITE INFORMATION:

Cleanup Site Name	Cleanup Date	
<input type="text"/>	<input type="text"/>	
Site Coordinator	Distance Cleaned (KM)	
<input type="text"/>	<input type="text"/>	
Total Weight (KG)	# of Garbage Bags	# of Recycling Bags
<input type="text"/>	<input type="text"/>	<input type="text"/>
# of Volunteers Working On This Card	Most Unusual Item	
<input type="text"/>	<input type="text"/>	

**Citizen scientists: Pick up all litter that you find and record data only for the items listed on the back.** Please **do not** use words or check marks. Only numbers are useful. Please return this card to the Site Coordinator when complete.

**EXAMPLE:**

Plastic Bags:		TOTAL #	<b>8</b>
---------------	--	---------	----------

PRESENTING SPONSOR

Loblaw Companies Limited

NATIONAL SPONSORS



# Individual Data Card

## SITE INFORMATION:

Cleanup Site Name	Cleanup Date	
<input type="text"/>	<input type="text"/>	
Site Coordinator	Distance Cleaned (KM)	
<input type="text"/>	<input type="text"/>	
Total Weight (KG)	# of Garbage Bags	# of Recycling Bags
<input type="text"/>	<input type="text"/>	<input type="text"/>
# of Volunteers Working On This Card	Most Unusual Item	
<input type="text"/>	<input type="text"/>	

**Citizen scientists: Pick up all litter that you find and record data only for the items listed on the back.** Please **do not** use words or check marks. Only numbers are useful. Please return this card to the Site Coordinator when complete.

**EXAMPLE:**

Plastic Bags:		TOTAL #	<b>8</b>
---------------	--	---------	----------

PRESENTING SPONSOR

Loblaw Companies Limited

NATIONAL SPONSORS



# Trash Collected

## MOST LIKELY TO FIND ITEMS:

TOTAL #

Cigarette Butts: =

Beverage Cans: =

Bottle Caps: =

Coffee Cups and Lids: =

Food Containers: =  
(i.e. yogurt or snack cups, milk containers)

Food Wrappers: =

Glass Bottles: =

Paper: =

Plastic Bags: =

Plastic Bottles: =

Plastic Cups: =

Six Pack Holders: =

Straws: =

Takeout Containers: =

Utensils: =

## TOP 3 ADDITIONAL ITEMS:

Identify the top 3 items found that are not listed on the card

1: =

2: =

3: =

## FISHING GEAR:

TOTAL #

Fishing Buoys, Pots or Traps: =

Fishing Net and Line: =

Rope (1 metre = 1 piece): =

## PRODUCT PACKAGING

TOTAL #

Soft Plastic Packaging: =

Rigid Bottles and Jugs: =

## PERSONAL HYGIENE:

TOTAL #

Diapers, Wipes, Tampons, Condoms: =

Syringes: =

Personal Protective Equipment: =  
(i.e. gloves, masks)

## TINY TRASH LESS THAN 2.5 CM:

TOTAL #

Styrofoam Pieces: =

Plastic Pieces: =

## OTHER TRASH:

TOTAL #

Balloons: =

Clothing, Shoes: =

Construction Materials: =

Large Styrofoam: =

Tires: =

Toys: =

# Trash Collected

## MOST LIKELY TO FIND ITEMS:

TOTAL #

Cigarette Butts: =

Beverage Cans: =

Bottle Caps: =

Coffee Cups and Lids: =

Food Containers: =  
(i.e. yogurt or snack cups, milk containers)

Food Wrappers: =

Glass Bottles: =

Paper: =

Plastic Bags: =

Plastic Bottles: =

Plastic Cups: =

Six Pack Holders: =

Straws: =

Takeout Containers: =

Utensils: =

## TOP 3 ADDITIONAL ITEMS:

Identify the top 3 items found that are not listed on the card

1: =

2: =

3: =

## FISHING GEAR:

TOTAL #

Fishing Buoys, Pots or Traps: =

Fishing Net and Line: =

Rope (1 metre = 1 piece): =

## PRODUCT PACKAGING

TOTAL #

Soft Plastic Packaging: =

Rigid Bottles and Jugs: =

## PERSONAL HYGIENE:

TOTAL #

Diapers, Wipes, Tampons, Condoms: =

Syringes: =

Personal Protective Equipment: =  
(i.e. gloves, masks)

## TINY TRASH LESS THAN 2.5 CM:

TOTAL #

Styrofoam Pieces: =

Plastic Pieces: =

## OTHER TRASH:

TOTAL #

Balloons: =

Clothing, Shoes: =

Construction Materials: =

Large Styrofoam: =

Tires: =

Toys: =

Thank you for contributing to trash free shorelines.

#teamshoreline



/shorelinecleanup



@shorelinecleanup



@cleanshorelines

Thank you for contributing to trash free shorelines.

#teamshoreline



/shorelinecleanup



@shorelinecleanup



@cleanshorelines

**Ocean Wise Shoreline Cleanup  
Ocean Wise Conservation Association  
Release of Liability, Waiver of Claims, Assumption of Risk and Indemnity and  
Model Release Agreement**

**Program: Ocean Wise Shoreline Cleanup** (The "Program")

**Cleanup Date:** \_\_\_\_\_

**Name of Registered Site Coordinator:** \_\_\_\_\_

**Name of Registered Cleanup Location:** \_\_\_\_\_

IMPORTANT: PLEASE READ THIS ASSUMPTION, RELEASE, AND WAIVER OF LIABILITY (**THE "AGREEMENT"**) CAREFULLY. IT OUTLINES CERTAIN DETAILS REGARDING YOUR PARTICIPATION IN THE OCEAN WISE CONSERVATION ASSOCIATION'S ("**OCEAN WISE**") OCEAN WISE SHORELINE CLEANUP. THIS AGREEMENT INCLUDES AN ASSUMPTION OF LIABILITY BY YOU (THE "**PARTICIPANT**") AND A RELEASE AND WAIVER OF LIABILITY IN FAVOUR OF OCEAN WISE CONSERVATION ASSOCIATION, AND ITS OFFICERS, PARTNERS, DIRECTORS, EMPLOYEES, SPONSORS, SERVANTS, AGENTS, VOLUNTEERS, REPRESENTATIVES, AGENTS, SUCCESSORS AND ASSIGNS (THE "**AGENTS**"). IN ORDER TO PARTICIPATE IN THE PROGRAM, THE PARTICIPANT MUST AGREE TO AND ABIDE BY THE CONDITIONS OF THIS AGREEMENT. BY SIGNING BELOW, THE PARTICIPANT INDICATES THAT HE/SHE UNDERSTANDS, ACKNOWLEDGES AND FREELY ACCEPTS THE TERMS OF THE AGREEMENT SET FORTH HEREIN.

**ASSUMPTION RELEASE AND WAIVER:**

In consideration for the opportunity to participate in the Program and for other good and valuable consideration, the receipt and sufficiency of which are hereby acknowledged, the Participant on his/her own behalf and on behalf of his/her heirs, administrators, successors, assigns, insurers, estate and anyone else who may make any claim for or on their behalf, hereby irrevocably and unconditionally states and agrees as follows:

1. I agree as a precondition to the Participant's participation in the Program and in consideration of Ocean Wise allowing the Participant to do so, that I will strictly be bound by the terms of this Agreement.
2. Without limiting anything else in this Agreement, I acknowledge that the novel coronavirus, COVID-19, is extremely contagious and dangerous and is believed to spread mainly from person-to-person contact. I am aware and understand that the Participant's participation in the Program may increase the likelihood of contracting and spreading COVID-19, even if Ocean Wise and the Agents implement safety protocols and procedures in compliance with the recommendations or requirements of public health and occupational health and safety authorities and the Participant follows those protocols and procedures.
3. The Participant agrees to strictly abide and comply with any policies put in place by Ocean Wise and the Agents from time to time that apply to the Participant, including all safety policies relating to COVID-19 and that such policies may require the Participant to report exposure to or symptoms of COVID-19. The Participant is under an obligation to notify Ocean Wise if the Participant observes any individuals not strictly abiding by Ocean Wise policies.
4. I certify that the Participant is physically fit and has not been otherwise informed by any physician. I certify that I know of no restrictions imposed on the Participant by any physician, or otherwise, that would in any way prevent him/her from participating in the Program. I agree that Ocean Wise and Agents shall not be liable for any pre-existing medical conditions or other conditions or circumstances that arise during the Program and/or any travel related thereto.
5. I understand and agree that the Participant is voluntarily participating in the Program at his/her own risk. I acknowledge that there are inherent dangers, hazards, and risks (collectively, "**Risks**") associated with this program. I freely accept and fully assume all responsibility for the inherent Risks and for any personal injury, death, property damage, or any other loss or injury which might result, possibility of sickness, death, or spread of COVID-19, either directly or indirectly, from the Participant's participation in the Program, from



**Ocean Wise Shoreline Cleanup  
Ocean Wise Conservation Association  
Release of Liability, Waiver of Claims, Assumption of Risk and Indemnity and  
Model Release Agreement**

the acts of others, or from the unavailability of emergency medical care.

6. I acknowledge that I have considered and evaluated the nature, scope and extent of the Risks involved with the Participant's participation in the Program, and, notwithstanding these Risks, I hereby confirm and agree that I voluntarily and freely choose to assume these Risks and the Participant's participation in the Program.
7. In the event of any accident or illness affecting the Participant, I authorize Ocean Wise and the Agents to authorize, on my behalf, all procedures, including admission to hospital and any necessary treatment therein deemed essential for the care and well-being of the Participant. Such action is only to be taken when immediate authorization from the undersigned cannot be obtained. It is understood that Ocean Wise and the Agents are not responsible for any medical care costs.
8. I understand and fully accept that Ocean Wise reserves the right, at any time, to refuse, without penalty or any obligation to refund any amount paid, continued participation in the Program by any person who at the sole discretion of Ocean Wise becomes a hazard to themselves, other Program participants, Ocean Wise, the Agents or animals.
9. I hereby waive any and all claims which I may have against Ocean Wise and the Agents and release and indemnify Ocean Wise and the Agents from any and all liability for injury, sickness, death, property damage or any other loss sustained by the Participant or the Participant's next of kin as a result of participation in the Program, due to any cause whatsoever, including, without limitation, negligence, breach of contract, or breach of any statutory or other duty of care by Ocean Wise or the Agents.
10. I acknowledge that if any portion of this Agreement is held to be invalid or unenforceable, all other provisions shall nevertheless continue to be valid and enforceable. This Agreement supersedes any oral or written statements made by any of Ocean Wise or Agents in connection with the Program. This Agreement is governed by the laws in force in British Columbia (without regard to conflicts of laws) and operates to the benefit of Ocean Wise and Agents, as well as their administrators, successors and assigns, and is binding on me and my heirs, administrators, successors, assigns, insurers and estate.
11. Model Release: By initialling in the Acceptance of Model Release box in the Participant Names/Signature section of this agreement, I grant Ocean Wise permission in perpetuity to record the participant and/or the participant's voice and to use the recording in any publications, displays, presentation or other related use in any format, including but not limited to print, electronic, www site or other media. All such recordings and all rights therein and thereto, including moral rights, shall be the exclusive property of **Ocean Wise Conservation Association**.

I HAVE READ THIS AGREEMENT AND UNDERSTAND THAT IT CONTAINS A PROMISE NOT TO SUE OCEAN WISE OR THE AGENTS AND THAT IT CONSTITUTES A RELEASE OF LIABILITY AND AN INDEMNITY FOR ALL CLAIMS. IF THE PARTICIPANT IS UNDER THE AGE OF NINETEEN, I CONFIRM THAT I AM HIS OR HER PARENT OR GUARDIAN AND THAT I HAVE EXECUTED THE AGREEMENT ON BEHALF OF THE PARTICIPANT.

This Agreement will be binding on myself or my child or ward, as the case may be, and our respective representatives, heirs and assigns.

***Signatures required on reverse side – please turn over.***



**Ocean Wise Shoreline Cleanup  
 Ocean Wise Conservation Association  
 Release of Liability, Waiver of Claims, Assumption of Risk and Indemnity and Model Release  
 Agreement**

*Send completed waiver forms by: Email – [shorelinecleanup@ocean.org](mailto:shorelinecleanup@ocean.org) OR Mail – Ocean Wise Shoreline Cleanup c/o Ocean Wise, Po Box 3232, Vancouver BC, V6B 3X8*

<b>Participant Name (please print)</b>	<b>Name of Parent/Guardian (if Participant is under 19 years of age)</b>	<b>Signature of Participant (Parent/Guardian signature if <u>under 19 years of age</u>)</b>	<b>Acceptance of Model Release (initial to indicate acceptance)</b>
1.			
2.			
3.			
4.			
5.			
6.			
7.			
8.			
9.			
10.			
11.			
12.			



**Ocean Wise Shoreline Cleanup  
 Ocean Wise Conservation Association  
 Release of Liability, Waiver of Claims, Assumption of Risk and Indemnity and Model Release Agreement**

Participant Name <i>(please print)</i>	Name of Parent/Guardian <i>(if Participant is under 19 years of age)</i>	Signature of Participant <i>(Parent/Guardian signature if <u>under 19</u> <u>years of age</u>)</i>	Acceptance of Model Release <i>(initial to indicate acceptance)</i>
13.			
14.			
15.			
16.			
17.			
18.			
19.			
20.			
21.			
22.			
23.			
24.			





## Contact information

### **Lake Huron Coastal Centre**

Email: [coastalcentre@lakehuron.ca](mailto:coastalcentre@lakehuron.ca)

Phone: 226-421-3029

Website: [www.lakehuron.ca](http://www.lakehuron.ca)

### **Ocean Wise**

Email: [shoreline@ocean.org](mailto:shoreline@ocean.org)

Website: <https://ocean.org/pollution-plastics/shoreline-cleanup/>

### **Municipalities**

Contact the local community events and parks manager of your area.

<https://www.ontario.ca/page/list-ontario-municipalities>